



gardenparty

A COLLECTION OF TRADITIONAL AND CONTEMPORARY OUTDOOR FURNITURE FROM TARGET FURNITURE LIMITED





Pennine Round Table



Pennine
Chair



Pennine Square Table



Pennine
Carver



Pennine Rectangular Table



All timber elements are manufactured by Target in the UK. They are produced in a solid hardwood timber proven to be ideally suited to meet the demands of the changeable UK climate. All timbers are imported from certified sustainable sources.



Pennine Bench

timberranges



Pennine City Table

Pennine High Stool

Pennine Bench
120cm
150cm

Pennine Round Table
75cm diameter
90cm diameter
105cm diameter

Pennine Rectangular Table
120cm x 70cm
150cm x 70cm
180cm x 70cm

Pennine Square Table
70cm x 70cm
80cm x 80cm
90cm x 90cm

Pennine City Table
90cm x 90cm

Brecon Table
120cm x 80cm

Brecon Octagonal Table
120cm octagon

Standard dimensions are shown for all tables, benches and combination units. Our design and manufacturing flexibility will almost invariably be able to accommodate any other specific requirements.



Brecon Table



Brecon Chair



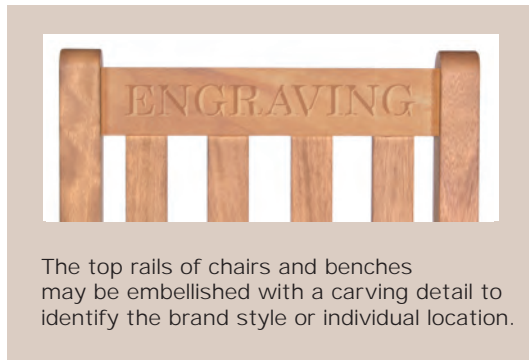
Brecon Octagonal Table



Brecon Carver



Cotswold Bench



The top rails of chairs and benches may be embellished with a carving detail to identify the brand style or individual location.



Cotswold Circular Table



Cotswold Carver



Cotswold Cross Table



Cotswold Chair



Peak Refectory Table



Mendip Bench



Mendip Chair



Mendip Rectangular Table

Mendip Long John Stool



Mendip Carver



Mendip City Table

Mendip High Stool

timberranges

Cotswold Bench
120cm
150cm

Cotswold Cross Table
90cm x 60cm
120cm x 60cm

Cotswold Circular Table
75cm diameter
100cm diameter
120cm diameter

Mendip Bench
130cm
160cm
190cm

Mendip Long John Stool
120cm
150cm
180cm

Mendip City Table
90cm diameter

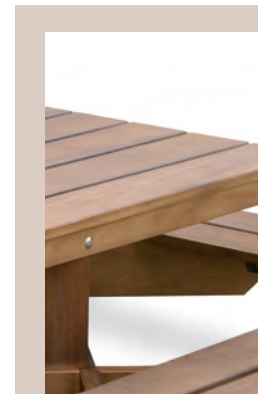
Mendip Rectangular Table
120cm x 70cm
150cm x 70cm
180cm x 70cm

Peak Refectory Table
90cm x 70cm
120cm x 70cm
150cm x 70cm
180cm x 70cm

Peak Long John Stool
(not shown)
90cm
120cm
150cm
180cm



Pennine
Combination Unit



The application of the Target External Timber Stain VR4 will achieve a durable rich brown mahogany finish. This exclusive preservative was developed specifically for Target Furniture; it has proven over a period of several years to significantly enhance appearance retention and thereby improve the longevity of the product.

You may alternatively select either the more traditional application of teak oil or choose to leave the timber untreated to allow it to weather naturally to a silver grey finish.



The design of the Skye Combination Unit ensures ease of access but dictates that floor fixing brackets should be used to maximise stability. Two per unit are generally considered to be sufficient.



Skye Combination Unit

timberranges

Pennine Combination Unit
110cm diameter
120cm diameter

Skye Combination Unit
120cm x 120cm



Snowdonia Bench

The Snowdonia collection is manufactured with a robust metal frame and is shown here finished in a silver powder coat. Other powder coat finishes are available. All timber components are manufactured in hardwood. Both the Snowdonia Chair and Carver may be stacked for storage purposes.



Snowdonia Table

wood&metallrange

Snowdonia Bench
120cm
150cm
180cm

Snowdonia Table
75cm x 75cm
90cm x 90cm
120cm x 70cm
150cm x 70cm
180cm x 70cm

Snowdonia Drinks Table
60cm diameter
70cm diameter
60cm x 60cm
70cm x 70cm



Snowdonia Carver



Snowdonia Drinks Table



Snowdonia Chair



Harmony Carver



Harmony Drinks Table



Harmony Chair



Harmony Tub Chair



Vienna Drinks Table



Harmony City Table



Harmony High Stool

All tables in the aluminium range can be supplied with the stainless steel inox top as shown. Alternatively, you may select from the Party Top collection on page GP9.

aluminium ranges

Harmony Drinks Table (3 feet)

60cm diameter

70cm diameter

Harmony Drinks Table (4 feet)

60cm x 60cm

70cm x 70cm

Harmony City Table

60cm diameter

Vienna City Table

60cm diameter - upper tier

Vienna Drinks Table (3 feet)

60cm diameter

70cm diameter

Vienna Drinks Table (4 feet)

60cm x 60cm

70cm x 70cm

Vienna Drinks Table (5 feet)

100cm diameter

Vienna Rectangular Table

110cm x 70cm

Tuscany Table

60cm diameter

70cm diameter

60cm x 60cm

70cm x 70cm

Alzastacker Table (3 legged)

60cm diameter

70cm diameter

Alzastacker Table (4 legged)

60cm x 60cm

70cm x 70cm



Vienna City Table



Tuscany Table



The Tuscany table is supplied with a folding top as standard. The bases interlock to allow these to be compactly stored. A trolley specifically designed to transport these tables is available



Vienna Rectangular Table



Alzastacker Table



K630 Beech



K631 Oak



K632 Zebrano



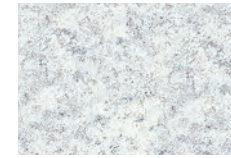
K615 Teak



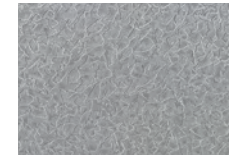
K634 Catalan



K635 Noir



K636 Fontana



K637 Cool Metal



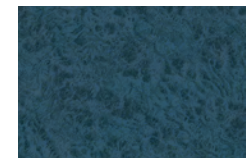
K638 Primrose



K639 Dark Red



K604 Dotty Grey



K613 Midnight

partytopranges

The Party Top is ideal for outdoor use and offers an equally durable alternative to the Inox top. It may be selected for use with most tables in the aluminium, metal and woven and metal ranges.



Dark Blue



Cream



Dark Green



White



Yellow



Black



Wine Red

Weave Colours



Carla Sidechair

Cordoba Drinks Table

Carla Tub Chair



Cordoba Rectangular Table

Malaga Chair



Regatta Sidechair

Regatta Table

Regatta Carver



Alberta Patio Set

woven&metallrange

Cordoba Rectangular Table
110cm x 70cm

Cordoba City Table (not shown)
60cm diameter

Cordoba Drinks Table (3 feet)
60cm diameter, 70cm diameter
Cordoba Drinks Table (4 feet)
60cm x 60cm, 70cm x 70cm

metallranges

Alberta Patio Table
70cm diameter

Regatta Table (3 feet)
60cm dia, 70cm dia

Regatta Table (4 feet)
60cm x 60cm, 70cm x 70cm

The Regatta and Alberta tables and chairs are available in any standard BS or Ral colour.



HW1
Black



HW9
Yellow



HW2
White



HW10
Emerald



HW3
Ivory



HW11
Sea Blue



HW4
Beige



HW12
Pink



HW5
Brown



HW13
Gold



HW6
Red



HW14
Midnight Blue



HW7
Bordeaux



HW15
Sky Blue



HW8
Grey



HW16
Bottle Green



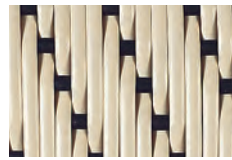
Weave Style 'A'



Weave Style 'E'



Weave Style 'C'



Weave Style 'H'



Weave Style 'D'



Weave Style 'I'

Please select a weave style and weave colours, identifying the combination where necessary. The binding colour should also be selected.



Casa Tub Chair



Casa Sidechair



Casa Table



Maison 215 Chair



Casa Armchair

woven&caneranges

Casa Table
60cm diameter, 70cm diameter, 80cm diameter

polypropyleneranges



Deseo Sidechair



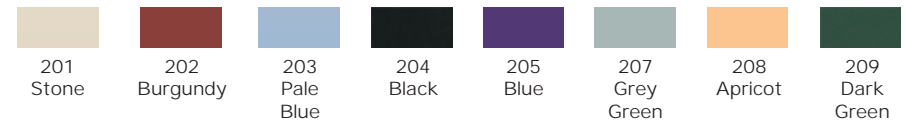
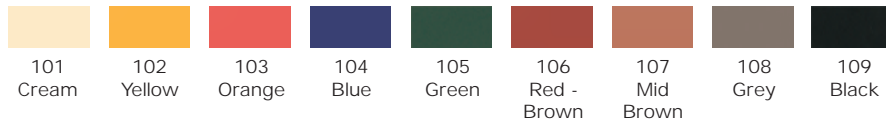
Deseo Carver



Liam Armchair



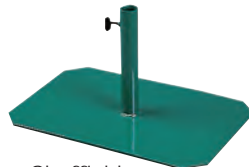
Liam Sidechair



Parasols are available in natural, green or blue fabric as shown and in three standard sizes. All are fitted with a pulley system and a tilt mechanism.

Parasol Bases as shown are intended for use under suitable tables in the Garden Party range. For free-standing use, additional consideration must be given to stability. Parasols should always be closed in adverse weather conditions.

Parasol Bases



Sheffield



Telford
(Etruscan Bronze only - as shown)

accessories

Parasol sizes
200cm diameter
250cm diameter
275cm diameter



Parasol



Target Furniture Limited, Studland Road, Kingsthorpe, Northampton NN2 6PZ
Telephone +44 (0) 1604 792929 Facsimile +44 (0) 1604 792500
Email: sales@targetfurniture.co.uk Web address: www.targetfurniture.co.uk

DESIGN, MANUFACTURE AND SUPPLY OF HIGH QUALITY CONTRACT FURNITURE FOR THE LEISURE INDUSTRY